

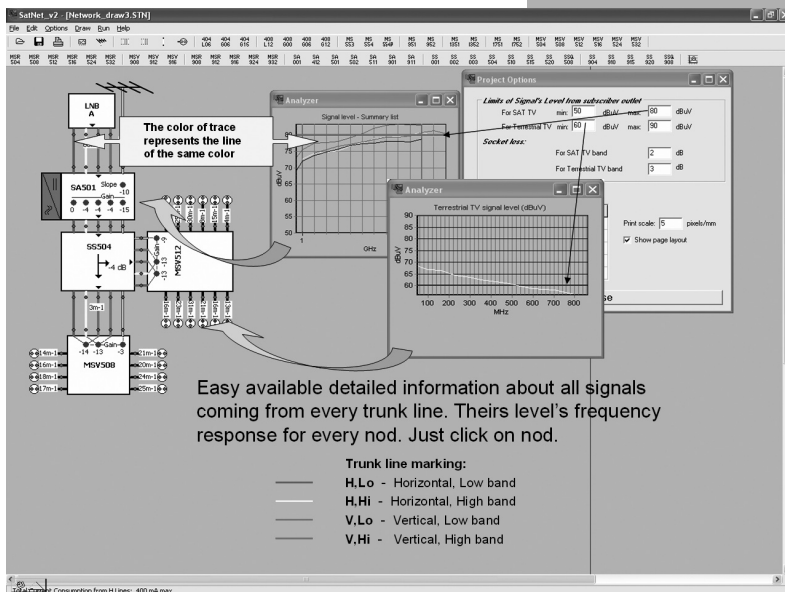
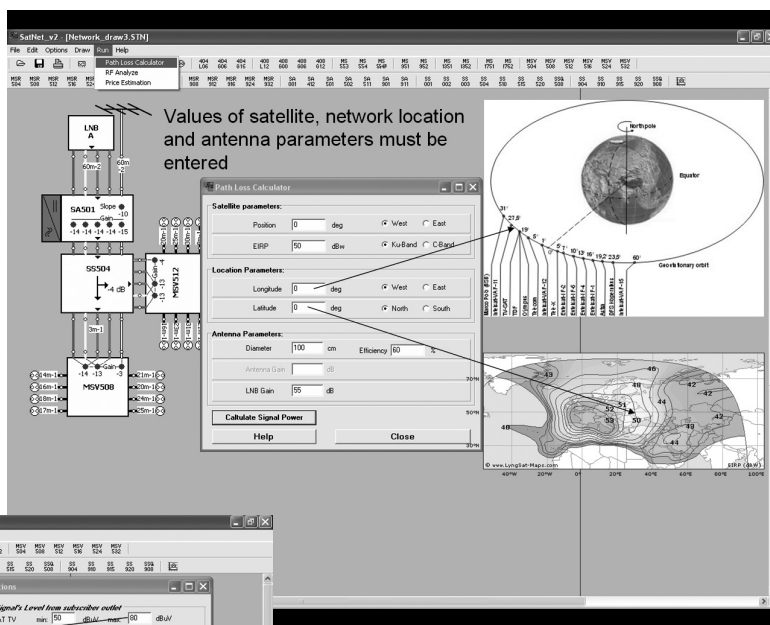


# System accessories

## Simulation Software SatNet

Freeware software for simulation of SAT IF distribution networks the latest version could be downloaded from [www.terraelectronics.com](http://www.terraelectronics.com), section **downloads**

- significantly facilitates designing of complex satellite IF distribution networks with TERRA components
- component library includes all TERRA satellite IF products and is constantly updated when new products are available
- accurateness of calculating allows to avoid preparing of invalid bill of materials, unreasonable estimated network prices and consumed time for troubleshooting the network during installation
- user-friendly graphical interface
- include "Path Loss Calculator" in the case if measured input levels are not available
- realistically simulates action of controls if they are
- have a useful tools for automatic positioning of controls and navigating inside big network
- easy to learn - short animated tutorial available



<p><b>1. Allowed complexity of network:</b></p> <ul style="list-style-type: none"> <li>- SAT IF trunk lines</li> <li>- terrestrial path</li> <li>- subscribers points</li> </ul>	<p>up to 16 (4 quattro LNB) 1 unlimited</p>
<p><b>2. Results</b></p>	<ul style="list-style-type: none"> <li>- comprehensive information about signal's level on every nod</li> <li>- indication of overloaded components</li> <li>- indication of nodes with lacking signal strength</li> <li>- total consumed current</li> <li>- report for network's price estimation</li> </ul>
<p><b>3. Memory occupied by software</b></p>	<p>12 MB (zipped)</p>
<p><b>4. Minimum hardware requirements</b></p>	<ul style="list-style-type: none"> <li>- 1 GHz CPU</li> <li>- VGA 768 by 1024 pixels</li> <li>- Windows 98/Windows XP or later version</li> </ul>